

FY2015

URBAN LAND INSTITUTE **LOUISIANA** - ANNUAL REPORT



FROM INFLUENCE TO IMPACT

It has been a privilege to serve this past year as the District Chair for the ULI Louisiana District Council. My predecessors have provided ULI Louisiana with excellent leadership, which allowed our focus this past year to be on the operational and growth potential of our District Council. More importantly, we made strides to position ULI Louisiana as **THE GO-TO SOURCE** for real estate information and **THE ORGANIZATION** for leaders.

As you evaluate our performance in FY14 (July 1, 2013 – June 30, 2014), allow me to share with you my highlights:

First and foremost, we have a solid Executive Committee, dedicated to strengthening the ULI brand and enhancing the value of your membership. The Executive Committee, along with other member volunteers and guided by ULI national staff, developed a Strategic Plan to serve ULI Louisiana as a dynamic tool to guide operations and our local and regional growth. ULI Louisiana currently has 213 members, notably 37 of these members are based in Baton Rouge. This significant growth in Baton Rouge broadens ULI Louisiana's influence and diversifies our programming opportunities.

Faced with a staff vacancy, ULI Louisiana filled the part-time District Coordinator position with a full-time District Manager to better serve our members and promote regional growth. We are fortunate to have Ms. Katye Fayard as our District Manager. Katye held the Associate position with ULI South Carolina, and we know her ULI expertise

will benefit ULI Louisiana. She will regularly reach out to our members, and we encourage you to call on her as well.

ULI Louisiana conducted its first Technical Advisory Panel (TAP) in 10 years. With the Downtown Development District as its Sponsor Organization (Client), ULI Louisiana assessed Downtown New Orleans' green space needs, priorities and prospects. During an intense two-day session, the panel of experts, drawn from our ULI Louisiana member volunteers, "brainstormed, planned and offered objective recommendations". The findings were published in a report titled Enhancing Open Space in Downtown New Orleans: Visions for a Greener District. ULI Louisiana's TAP process is designed to link Sponsor Organizations to the knowledge and experience of ULI and Its members and provides an outlet for our members to give back to the community.

In March, the 2014 ULI Foundation Governors Retreat was held in New Orleans. Over a period of four days, our members, supported by a prestigious line up of national experts and key local business and community leaders, explored the theme of urban resiliency through the sharing of stories of New Orleans' recovery in the aftermath of Hurricane Katrina. Highlighting this event was a dinner and reception hosted by Joseph and Sue Ellen Canizaro during which Governor Bobby Jindal addressed the audience.

We gratefully acknowledge the support and on-going assistance of our Sponsors. This year, we have an ambitious

schedule of programs, including more TAPs; and we will focus more on actively engaging our ULI Louisiana members. To support our efforts, your generosity is needed even more this year. We thank our volunteers; their willingness to commit their time and wisdom is humbling. But, more support is needed and we encourage you to actively participate in your ULI Louisiana.

Sincerely,



Steven J. Massicot
ULI Louisiana Chair
Senior Vice President/Managing Director
of Real Estate
Perez, APC

FY2015 HIGHLIGHTS

CONDUCTED our 2nd consecutive TAP panel in 2 years. Sponsored by Jefferson Parish Economic Development Commission (JEDCO) and Ochsner Health Systems, the TAP addressed the Ochsner Medical Corridor land use issues.

CREATED a new Strategic Plan.

WELCOMED the ULI Hines Competition to New Orleans for the first time in the programs' history. 5 teams competed to create the best plan for the Bio Medical & Lafitte Greenway corridors.

LAUNCHED building tour series, "Content & Cocktails", free for members, in order to enhance members' benefits and networking opportunities.

HOSTED the first Regional City Exchange

with our ULI Southern States regional partners ULI Memphis, ULI Nashville, & ULI Atlanta.

PARTNERED with the Regional Planning Commission & UNO to host two series about creating and financing Smart Growth, featuring nationally renowned speaker, Ellen Dunham-Jones.

PARTICIPATED in the Young Leader Group Exchange in Denver.

EXPANDED our outreach and programming to the Baton Rouge market.

HIRED a full time District Council Manager devoted to enhancing our members' ULI experience.



TAP panelist held conference and breakout sessions with a range of invited stakeholders



ULI CONNECTS



ULI CONNECTS the real estate industry, community leaders and community interest groups through programs that attract a broad spectrum of leaders and experts focused on building better places.

As New Orleans continues to grow and prosper, it is crucial for ULI members to be aware of changes and trends across the city's landscape. ULI Louisiana events connected people from across the nation and every discipline— developers, investors, planners, public officials, designers, scholars, and more.

Left:
Young Leaders
Group Exchange
Miami, Florida.

Above left: Former
ULI Louisiana chair
Marie Moore introduces
speaker at the 4th An-
nual What's Really Going
On Conference.

Above right: Attendees
at the ULI Fall Meeting in
Chicago.

ULI Louisiana offered large scale events – the Affordable Housing Workshop; Community Land Trust: A Viable Path for Housing Preservation in New Orleans; and New Orleans Scattered Site Development, Opportunities and Challenges – where industry experts provided updates on national and local programs, policies and priorities.

The opportunity for more intimate gatherings were also offered to our ULI Louisiana members- the CEO Coffee Chat Series provided our members, during one-hour breakfast programs, exclusive access to a CEO, city-leader or industry expert who is leading the charge on issues such as the airport, infrastructure, tourism, and the port's role in local real estate.

Also, through our series of building tours, mixers and socials, our ULI members connected to develop their skills, grow their professional network, and improve our neighborhoods, cities and region.

FY15 PROGRAMS

MAJOR PROGRAMS

6th Annual What's Really Going On & Emerging Trends in Real Estate 2015
Green Leasing & The Benefits of Greening Commercial Real Estate with USGBC Louisiana
1st Annual ULI Southern States City Exchange
 Liberty Kitchen/The ReFresh Project
 Saeger Theatre
 Paramount & South Market District
 The VA Hospital & The Biomedical Corridor
 The Rice Mill Lofts
 NOCCA Expansion
 Holy Cross School Redevelopment
 Iberville Redevelopment
Rethinking the Suburbs with Ellen Dunham-Jones with UNO Transportation Institute, The Regional Planning Commission, Downtown Development District, & the APA of Louisiana

SPECIAL PROGRAMS

2nd Annual Technical Assistance Program: The Ochsner Medical Corridor
The ULI Hines Competition- April 2015

BUILDING TOURS

LSU Tiger Stadium South End Expansion- Baton Rouge
Old No. 77 Hotel & Chandlery
University Medical Center
Il Mercato
Gallier Court
3rd Street Renaissance- Baton Rouge

YOUNG LEADERS GROUP PROGRAMS

Transit Pub Crawl: The Future of Public Transit in Greater New Orleans
Mid-City Bike Tour: A Look at Current & Future Developements Along the Lafitte Greenway Corridor
 Joan Mitchell Center, The General Laundre
 Carver Theatre
Monthly YLG Happy Hours at New & Old Establishments in New Orleans

FY15 DISTINGUISHED SPEAKERS

Cedric Grant- Executive Director of Sewerage and Water Board of New Orleans

Rachel Heiligman, Executive Director Ride New Orleans

Jeffrey Schwartz, Executive Director, Broad Community Connections

Melissa Ehlinger- Interim Executive Director, NOLA Business Alliance

Abhay Patel- VP of Business Development, NOLA Business Alliance

Matt Schwartz- The Domain Companies

Joseph Jaeger- President, MCC Group

Josh Collen- Vice President of Development, HRI Incorporated

Sean Cummings, President Ekistics, Inc.

Steven Massicot- Perez APC

Ellen Dunham-Jones- Professor of Architecture & Urban Design, Georgia Tech

Anita Kramer- Vice President, ULI Center for Capital Markets, the Urban Land Institute

Casius Pealer- Director of Master of Sustainable Real Estate Programs, Tulane University

Tara Hernandez- JCH Development

Townsend Underhill- Stirling Properties

Alan McDonnel- The McDonnel Group

Stephen Farnsworth- Walker & Dunlop

Tom Leonhard- President, HRI Properties

Angela O'Byrne- President, Perez, APC

Michael Hecht- President & CEO Greater New Orleans, Inc.

Stephnie Grace- Political Reporter, The Advocate

Richard Campanella- Professor of Geography, Tulane University

Snappy Jacobs

Dyke Nelson- Principal, Dyke Nelson Architecture/DNA Workshop

Stick Thibodeaux

Frank Duke- Planning Director, East Baton Rouge Planning Commission

Adam Sledd- Institute for Market Transformation

Will Bradshaw- President, Green Coast Enterprises

Michael Pousson- CBRE

Marcel Wisznia- President, Wisznia Architecture + Development

Parke McEnergy- The McEnergy Company



ULI IMPACTS

The Ochsner Medical Corridor Creating a Vision in Jefferson Parish A ULI Louisiana Technical Assistance Panel June 23-24, 2015

ULI IMPACTS communities by making a measureable, positive difference in cities and regions. More than any other single effort of ULI, the Technical Assistance Panel (TAP) and other ULI advisory services are arguably the best example of the ULI mission at work—industry leaders at the top of their game, giving of their time and insight to shape a better community. In June, ULI Louisiana conducted its second consecutive annual TAP with JEDCO & Ochsner Health Systems.

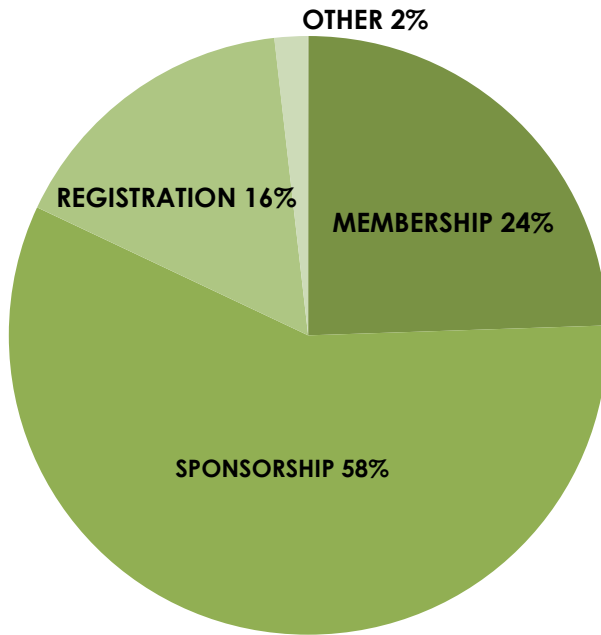
HOW MUCH CAN WE REVEAL HERE?

The TAP panel included 6 experts from various disciplines including real estate developers, architects, transportation specialists, engineers, landscape architects, and land use specialists. During the two-day session, the panel brainstormed, planned and offered objective recommendations.

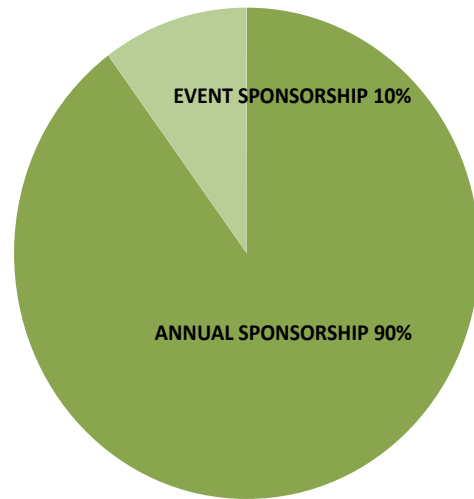
The group decided to formulate one concept that would encompass answers to all of the questions as laid out, and their implications. That concept is a town center, imagined by the group as “O-Town,” built up as a mixed-use development that serves the needs of Ochsner’s staff, patients, scholars, the local community and the parish all at once. This concept addresses the concerns and insights of the many stakeholders through the years of experience brought to the table by panelists, and helps Ochsner’s expansion needs evolve into a plan with enormous potential impact for Ochsner, businesses and other economic drivers as nurtured by JEDCO, and the entire region.

ULI will present the findings of the TAP in October 2015 at a public hearing. A final report can be found on our website at that time: www.louisiana.uli.org.

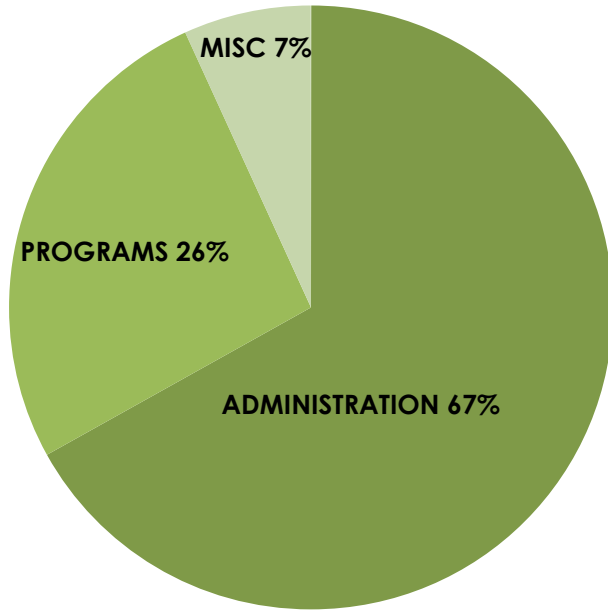
BY THE NUMBERS



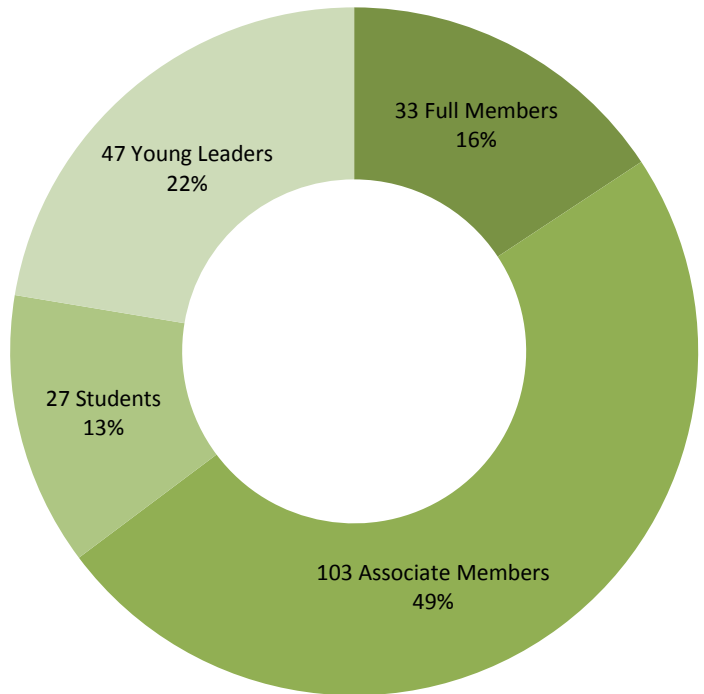
FY14 REVENUE



FY14 SPONSORSHIP REVENUE BREAKDOWN



FY14 EXPENSES



FY14 MEMBERSHIP PROFILE

RECOGNITION OF SPONSORS

DIAMOND



Walker & Dunlop

EMERALD



RUBY

Arthur J. Gallagher & Co.
Commercial Properties Realty Trust
Chenevert Architects
Classic Properties
Downtown Development Group
Gibbs Development
HRI Properties
Iberia Bank
Landis Construction Co., LLC
Laporte, APAC

Lugenbhul, Wheaton, Peck, Rankin & Hubbard
NAI Latter & Blum
Perez, APC
Roy Anderson Corporation
Sher, Garner, Cahill, Richter & Klein
Steeg Law Firm
Trapolin Peer Architects

EXECUTIVE MANAGEMENT COMMITTEE



District Council Chair
Steven Massicot
Perez, APC



Governance Co-Chair
Joseph Canizaro
Columbus
Properties



Governance Co-Chair
Marie Moore
Sher, Garner, Cahill,
Richter & Klein



Treasurer
Gary McNamara
First Bank & Trust



Mission Advancement
&
Sponsorship Chair
**Stephen
Farnsworth**
Walker & Dunlop



Community Outreach
Chair
Leigh Ferguson
Downtown
Development
District of New
Orleans



Programs Chair
New Orleans
Laura Woltanski
Walker & Dunlop



Programs Chair
Baton Rouge
D'Wana Chiles
Arthur J. Gallagher
& Co.



Membership Chair
Eddie Guidry
Trapolin & Peer
Architects



Young Leaders Group
Chair
**Brandon
Dughman**
Enterprise
Community Partners



District Council Manager
Katy Fayard
ULI Louisiana

ADVISORY BOARD

Ryan Albright

Tulane University

Carl Bantle

Shreve Land

Joshua Bruno

Downtown Development Group

Joseph C. Canizaro

Columbus Properties, L.P.

D'Wana Chiles

Arthur J Gallagher & Co

Stephen Coburn, Jr.

Project Homecoming New Orleans

**U. Lincoln Coleman, III, CPM,
CCIM**

U.L. Coleman Companies

R. Keith Colvin

Jones Walker

Kim Cook

Arts Council of New Orleans

Brandon Dughman

Enterprise Community Partners

Melissa Ehlinger

NOLA Business Alliance

Stephen Farnsworth

Walker & Dunlop

Leigh M. Ferguson

Downtown Development District
of New Orleans

Helen Foster

Foster Strategy, LLC

William A. Gilchrist, FAIA

City of New Orleans

Leon L. Giorgio, Jr.

Select Properties, Ltd.

G. Eddie Guidry, AIA

Trapolin-Peer Architects

Kimberly Hart

Lugenbuhl, Wheaton, Peck, Rankin,
& Hubbard

Jeffrey P. Hebert

New Orleans ReDevelopment
Authority

Steve Hicks

Provident Resources Group, Inc.

Tara Carter Hernandez

JCH Development

Andrea Arons Huseman

Corporate Realty, Inc.

Joseph A. Jaeger, Jr.

MCC Group

Charles A. Landry

Jones Walker Law Firm

Rose LeBreton

Lugenbuhl, Wheaton, Peck, Rankin,
& Hubbard

Gary McNamara

First Bank & Trust

Steven J. Massicot

Perez, APC

James E. Maurin

Stirling Properties, Inc.

Martin A. Mayer

Stirling Properties, Inc.

Jordan Monsour

Butler Snow LLP

Marie A. Moore

Sher Garner Cahill Richter Klein &
Hilbert, L.L.C.

Daniel P. Poulin, CCIM, SIOR

Sealy & Company, Inc.

John L. Renne

University of New Orleans

Michael T. Sullivan, AIA

Looney Ricks Kiss

Gerard "Stick" Thibodeaux

Commercial Properties

David L. Waltemath

Classic Properties

Milford Wampold, III

Wampold Companies

Kurt M. Weigle

Downtown Development District
of New Orleans

Laura Woltanski

Walker & Dunlop



ULI LOUISIANA MEMBERSHIP

Chris Nunez Africh Inc.	Dana Brown & Associates,	Kim Cook Ab Coulon	Arts Council of New Orleans Tulane University	Jeffrey W. Gray LaSwanda Green	Jones Walker Law Firm Downtown Development
Ryan Albright	Tulane University	Jessie Craighead	Walker & Dunlop	District of New Orleans	
Emel Alexander	UREC	Stephen Craver	Renaissance	Gene Guidry, AIA	Trapolin-Peer Architects
Gabrielle Alicino Housing	Providence Community	Neighborhood Development Corporation		Katherine Guidry	Masters in Urban and
Brian Andrews	Louisiana State University	Collette Creppell	Eskew+Dumez+Ripple	Regional Planning / UNO	
Delerio Bailey	Latter & Blum Inc/Realtors	Lynn Daigle	Latter & Blum	Rhaoul Guillaume, Jr.	RAG Development, LLC
Calla Bardwell	Tulane University	Hanlon deVerges		W. Cole Guthrie	U.L. Coleman Companies
N. Buckner Barkley, Jr.	Marrero Land and Improvement Association, Limited	Garreth DeVoe	Tulane University Law School / Freeman Business School	David Harms	Louisiana State University
Shawn Barney & Advisory	CLB Porter Development	Carl Dillon Urban Restoration Enhancement Corporation		Doug Hart Walker & Dunlop	
Mac Bauer Stirling Properties		Tracey Dodd		Crissie Head Landry Advisors	Laporte CPA's Business
Ronald Beard	BWB Advisors, LLC	Jeanne Driscoll	Laporte CPAs & Business Advisors	John O Hearin	Hearin Properties New Orleans
Marc Berard, Jr. Studio	The Front Door Design	Brandon Karam Dughman	Enterprise	Jeffrey P. Hebert	ReDevelopment Authority
Michael James Bertel Development	Bertel Construction & Development	Community Partners Org		Stuart Helo	CSRS
Brenda M. Breaux ReDevelopment Authority	New Orleans	Frank Duke	Baton Rouge/East Baton Rouge Parish Planning Commission	George Hero, IV Architect, LLC	George Hero AIA
Quin Breland, IV Bearman, Caldwell & Berkowitz, PC	Baker, Donelson, New Orleans	Alex Selico Dunn, Jr.	MCC Group	Donovan Hicks Group, Inc.	Provident Resources
Christian Jonassen Brierre Federal Alliance	New Orleans	C2162082 Ebsco, C2162082 University Library	Tulane	Steve Hicks Group, Inc.	Provident Resources
Debbie Brockley, CPA Advisors	Laporte CPAs & Business	John Chad Edwards Group	Edwards Development	Stephanie Anne Hilferty Commercial Real Estate, Inc.	SRSA
AJ Brooks	Tulane University	Matthew Edwards	Guarantee Service Team	Bryan Hodnett	DonahueFavret Contractors, Inc.
Joshua Bruno Group	Downtown Development	Melissa Ehlinger	NOLA Business Alliance	Lisa Holyfield	Holyfield, Inc.
Nicholas Bruno	Redmellon, LLC	Neil Erwin Neil Erwin Law, LLC		Kendra Home	NAI Latter & Blum
Michael Bucher	Stirling Properties	Stephen Farnsworth	Walker & Dunlop	Andrea Arons Huseman Realty, Inc.	Corporate
Chris Cali	Gallo Mechanical	Leigh M. Ferguson District of New Orleans	Downtown Development	Snappy Jacobs, CCIM Real Estate Management, LLC	
Joseph C. Canizaro	Columbus Properties, L.P.	Christopher Joseph Ferrari	CSRS, Inc	Joseph A. Jaeger, Jr.	MCC Group
Dan Charchian	U.L. Coleman Companies	Kimberly Ferrari	Tulane University	Ryan Jaeger	MCC Group
D'Wana Chiles	Arthur J Gallagher & Co	Harold Flynn, Jr.	Belle Terre Land, LLC	Tanya Jimenez	Tulane School of Architecture
Ryan Christiansen	Liskow and Lewis	Helen Foster	Foster Strategy, LLC	Mandela Kazi	Diversified Enterprise
Roger Clark	U.L. Coleman Companies	Blaine Frischhertz LLC	Frischhertz Design Group,	Ashley King	Trapolin-Peer Architects
Stephen Coburn, Jr. Libertas Equity Partners	Project Homecoming/ Companies	Blake Gallagher	ISC Constructors, LLC	Morgara King	Arts Council of New Orleans
Mary Frances Coleman Companies	UL Coleman	Peter Gardner	Gardner Development	Kimberly Knight Hart Peck, Rankin & Hubbard	Lugenbuhl, Wheaton, Gordon, Arata, McCollam, Duplantis & Eagan, LLC
U L Coleman III, CPM, CCIM Companies	U.L. Coleman	Emily Sanders Garner	Walker & Dunlop	Peter A. Kopfinger	
Charlie Colvin Real Estate	Beau Box Commercial	John Gasparre	CBRE, Inc.	Kevin Krejci	Project Homecoming
R. Keith Colvin	Jones Walker	Josh Gertler	Basis Development	Zachary H. Kupperman Firm LLC	The Steeg Law
Conrad T. Comeaux	Lafayette Parish Assessor	Kurt Gerwitz	Project Homecoming	George Kurz	Kurz & Hebert Commercial Real Estate, Inc.
Camille Coniglio	Wells Fargo Bank, N.A.	Melissa A. Gibbs	Gibbs Construction, LLC		
		William A. Gilchrist, FAIA	City of New Orleans		
		Leon L. Giorgio, Jr.	Select Properties, Ltd.		
		David Grand, Jr. Group, Inc.	Provident Resources		
		John A. Graves	Evans-Graves Engineers		

Regina La Macchia	Green Coast Enterprises	Rebecca Miller	Middleberg Riddle Group	Joel Franklin Ross	Concordia - Community
Anna Labadie	Freeman School of	Jill Minsky U.L.	Coleman Companies	Centered Planning + Design	
Business - Tulane University		Deborah J. Moench	Sher Garner Cahill Richter	Jaime Roy U.L.	Coleman Companies
Charles A. Landry	Fishman Haygood	Klein & Hilbert, L.L.C.		Alex Rubets	Belvedere West
Austin Lavin	Corporate Realty	Clifford Moller	GAEDA	Management	
Neil LeBouef	Lafayette Consolidated	Marie A. Moore	Sher Garner Cahill Richter	Andrew Ruhs	MCC Real Estate
Government		Klein & Hilbert, L.L.C.		Heath A. Rushing	Land Venture Partners, LLC
Rose McCabe LeBreton	Lugenbuhl,	Brian Morrice	Tulane University	Philip Russo	University of New Orleans
Wheaton, Peck, Rankin & Hubbard		Matt Morrin	Enterprise Community	Benjamin Samuels	Tulane University
Heidi C Lee	Appraisal Review &	Partners Org		Christopher Sarpy	Sarpy Development
Consultation		Andreanecia M. Morris	Providence	Keith Scarmuzza	Mathes Brierre Architects
Melissa Lee	New Orleans	Community Housing		Gus W. Schram, III	Jack Lawton, LLC
ReDevelopment Authority		Jenga Mwendu	Tulane University	Derek Scontrino	Landcraft LLC
Nicholaus Leverett	Tulane Freeman School of	Ryan Nash DSLD, LLC		James Setze	Capital Region Planning
Business		Dyke Nelson	DNA Workshop	Commission	
Vanessa Levine	Volunteers of America of	James E. Neville	Neville Development, LLC.	Jonathan Shaver, CCIM, CCIM	RE/MAX
Greater New Orleans, Inc.		Terri North	Providence Community Housing	Commercial Brokers, Inc.	
Jon F. Leyens, Jr.	Baker Donelson Bearman	Johnny Orgeron, Jr.	Lafayette Consolidated	Michael Siegel	Corporate Realty
Caldwell & Berkowitz		Government		Trent Siskron	American South Fund
Xichen Liang	Tulane University	R. Kelley K Pace	Louisiana State University	Management	
Howard Long	Roy Anderson Corp	Michael P. Palamone	Urban Systems Associates, Inc.	James E.A. Slaton	Stone Pigman Walther Wittman
Michael L. Mancuso	Elkins, PLC/St. Charles Title Corporation	Wesley Palmisano	Palmisano Contractors LLC	V. Carlos Slawson, Jr.	Louisiana State University
William R. Manning	Manning Architects	Casius Pealer	Tulane University	Victor Smeltz	Renaissance
Nicholas Mannix	Woodward Design + Build	Paula Peer Trapolin-Peer Architects		Neighborhood Development Corporation	
John Marquette	Fishman Haygood, L.L.P.	Gus Pelias, Jr.	The Park Companies	Delton Smith	SMC Hotels
Steven J. Massicot	Perez, APC	Rawlston Phillips, III	River View Development	Jon Smith	The French Market Corp
James E. Maurin	Stirling Properties	Michael Pizzolatto	Tulane University	Elizabeth Louise Smyth	Tulane
Martin A. Mayer	Stirling Properties	Kris Pottharst	Project Homecoming	University	
Richard McCall	Downtown Development	Daniel P. Poulin, CCIM, SIOR	Sealy &	Nick Stillman	Arts Council of New Orleans
District of New Orleans		Company, Inc.		Jeffrey Stolier	Gibbs Construction
Todd Ortique McDonald	Liberty Bank	Allison Price	Tulane University	Michael T. Sullivan, AIA	Looney Ricks
and Trust		Kathryn O'Brien Querbes	UL Coleman	Kiss/LRK L.L.C.	
David McGovern	AeroStarSES	Companies		Saun August Sullivan	Vantage Development
Heather Begneaud McGowan	Stone Pigman	Brad Reese	MAPP Construction	Cherry Talbert	Civil Design &
Walther Wittmann L.L.C.		William Reich	Reich Associates, LLC	Construction, Inc.	
Andrew T. McMains	Wilbur Marvin Foundation	John L. Renne	University of New Orleans	Robert F. Talbot	Robert F. Talbot &
Gary Joseph McNamara	First Bank and Trust	Kathryn L Reynolds	The Velvelan Group	Associates	
Trust		Tre Rials	NOLA Business Alliance	Natawat Thanomsat	Tulane University
Brett J. Mellington	Lafayette Economic	Michelle E. Richard	VergesRome Architects,	Gerard Thibodeaux	Commercial Properties
Development Authority		APAC		Eric Thomas	Robert Reich School
Michael Merideth	Verius Property Group, LLC	Paul Richard, Jr.	RDG Properties, LLC	Jennifer Ilana Tintenfass	Steege Law
LLC		Richard P. Richter	Sher Garner Cahill Richter	Firm, LLC.	
Holly Messa	Rotolo Consultants, Inc.	Klein & Hilbert, L.L.C.		Peter Michael Trapolin	Trapolin-Peer
Quentin Messer	NOLA Business Alliance	Boyce Rigby	Stream Realty Partners	Architects	
Troy H. Middleton	Louisiana State University	Tyler L Robinson	**Stirling Properties	George Townsend Underhill, IV	Stirling
Library		Louis M. Rodriguez	Aequitas Housing	Properties, Inc.	
Alvin C. Miester, III	Sher Garner Cahill Richter	Zachary Rosenberg	The Steege Law Firm LLC		
Klein & Hilbert, L.L.C.					

LOOKING FORWARD

UPCOMING CALENDAR EVENTS

September 23, 2015

The New CZO
The IP Building, New Orleans

September 19, 2015

ULI Tailgate: LSU vs. Auburn
Baton Rouge

October 5-8, 2015

ULI Fall Meeting
San Francisco, CA

October 25, 2015

YLG Marigny/Bywater Bike Tour
New Orleans

November 4, 2015

Partner EventCPEX
Baton Rouge

November 11, 2015

6th Annual What's Really Going On +
Emerging Trends in Real Estate Confer-
ence
Pan American Building, New Orleans

December 5, 2015

YLG Transit Pub Crawl
New Orleans

December 2014

ULI Annual Holiday Party
New Orleans

Spring 2016

Development 101: "From Dirt to Done"
A 5-Part Series on Making Projects Happen
Baton Rouge

Spring 2016

TAP #3
New Orleans or Baton Rouge

April 19-21, 2016

ULI Spring Meeting
Philadelphia, PA



P.O. Box 70224
New Orleans, LA 70130
504-529-1399
Louisiana.ULI.org